



RAG
RAGLAN
ART
TRAIL
GUIDE

Whaingaroa Artists
www.raglanartscentre.co.nz


WELCOME!

The Raglan Community Arts Council welcomes you to the Raglan Art Trail Guide.

The Guide provides contact information for Artist Studios that are open for visits at most times during the year. Before visiting Studios it's essential to contact the Artist regarding opening hours.

This Guide is also the official brochure for the Open Studio Weekend on January 28th, 29th and 30th 2012. The studio opening hours for this weekend are 10.00am – 4.00pm. During this weekend most studios will be open to the public and there will also be working artists and displays at the Raglan Old School Arts Centre in Stewart St, Raglan.

Be sure to keep an eye out for the **turquoise** + **pink** flags and posters placed outside every participating studio/gallery.

All artists participating in the Open Studio Weekend are noted in the Guide by the symbol: 

We hope you enjoy visiting the many studios and meeting the artists.

The Art Trail Team: Jacqueline and Jenny.



A wonderful opportunity to visit your favourite Raglan artists in their studios, or to meet new ones ~ see their latest work and explore the wide variety of art on offer in the Raglan Whaingaroa area.

For information about visiting Raglan ~ galleries, cafés, accommodation and other activities and indulgences that Raglan has to offer ~ please see listings at the back of this brochure.


Organised by



Old School Arts Centre

The Raglan Community Arts Council gratefully acknowledges the funding support from the Raglan Community Board and:



 All artists participating in the Open Studio Weekend are noted in the Guide by this symbol.

At all other times of the year, contact the artist direct for opening hours.

FOREWORD

Our beautiful town surrounded by the inspiring rugged landscape provides a perfect stimulus for artists. Superb art is created here. While the Community Gallery at the Old School Arts Centre, and other local galleries, allow art to be exhibited, the vast body of work is not available for visitors to appreciate.

In 2008 the Raglan Community Arts Council (RCAC) published a slender Art Trail brochure to put some of the many artist studios on the map. This first guide was enthusiastically embraced by visitors to Raglan. It provided the foundation for the much more comprehensive 2011 Raglan Art Trail Guide. The Open Studio Weekends held in 2011 invited visitors into the artist studios. This year's 2012 Guide provides updated information and continues the combination of Art Trail Guide and Open Studio Weekend so that visitors can visit our town to enjoy and appreciate all of our arts.

A big thank you to the Art Trail Team of Jacqueline and Jenny who brought this project to fruition. The RCAC also wishes to thank participating artists for their support in this Art Trail Guide and the third Open Studio Weekend. Without their support, the volunteers who gave their time freely and the businesses who supported it financially, none of this would have been possible.


Rodger Gallagher
Chairperson
Raglan Community Arts Council




Old School Arts Centre

TABLE OF CONTENTS

Open Studio Weekend Details	1.
Artists Details	3.
Map for Artists in Raglan	8.
Map for Artists in Wider Raglan Area	9.
Galleries & Designer stores	10.
Art Suppliers	11.
Cafes & Restaurants	11.
Accommodation	12.
Activities & Indulgences	13.

 All artists participating in the Open Studio Weekend are noted in the Guide by this symbol.

 Not all art studios will have wheelchair access. Contact artists in advance for more information on access when planning your visit.

This Art Trail Guide is current at the time of publishing. For further details and updates on events in Raglan please visit www.raglanartscentre.co.nz

no. 1

AMANDA WATSON

Painting



027 671 3320



amandawatson@clear.net.nz



www.amandawatson.com



OS

no. 5

DOT WILLIAMS

Pastel and Acrylic

15 Stewart St, Raglan



07 825 7131 / 021 243 6866



dotwilliams@actrix.co.nz



no. 2

ANITA SEDDON

Textile art using silk, wool, cotton
Old School Arts Centre



07 825 7529



OS

no. 6

GAENOR HUNTER

Mixed media paintings acrylic/oil
on canvas/board

10A Wainamu Rd, RD3 Raglan, 3297



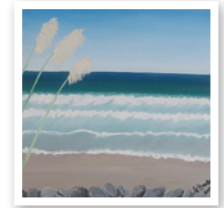
07 825 0074 / 0276 865 144



gaenor@visualfeelings.co.nz



www.visualfeelings.co.nz



OS

no. 3

BRIGID W ALLAN

Painting



021 164 9095



biddsnz@yahoo.co.nz



OS

no. 7

GENE POSPISIL

Jewellery, Sculptor

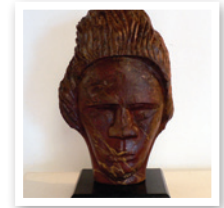
No 22 Cross St, Raglan



021 149 3589 07 825 8712



genepospisil@gmail.com



no. 4

**CLARE WIMMER
ABODE POTTERY**

Porcelain lighting, vessels, wall pieces and
organic forms.

33C Waitetuna Valley Road, RD1, Raglan
(Wheelchair access)



07 825 5155 / 021 619 567



wimmerdc@xtra.co.nz



OS

no. 8

HEARTBEADS

Handcrafted glass art & objects.

Glass and silver jewellery.

78D Greenslade Road (Disabled access)



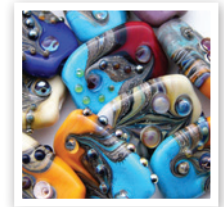
07 825 0992



heartbeads07@gmail.com



www.HeartBeads.co.nz



OS

OS

Artists with this icon are participating in the open studio weekend.
See page 1. of this guide for details.

Open Studio Weekend January 28th, 29th & 30th 2012.

At all other times please contact artists directly to arrange viewing.

no. 9

JANE GALLOWAY

Painting and Prints
23 Nihinihi Ave, Raglan

07 825 0083
jane@palmprints.co.nz
www.janegalloway.vc.net.nz



OS

no. 13

JODI COLLINS

Visual Artist
Popin Creations, 11 Bankart St, Raglan

0274 247 277
miss_popinjay@yahoo.com



OS

no. 10

JEAN CARBON ~ CBOB

Unique hand dyed textiles, silk scarves and
fashion garments
492 Wainui Rd, Raglan

07 825 8877
jean@cbon.co.nz
www.cbon.co.nz



OS

no. 14

JULIAN GODFREY

Painting and Prints
23 Nihinihi Ave, Raglan

07 825 0083
julian@palmprints.co.nz



OS

no. 11

JETTE JESPERSEN

Paint / Draw / Weave (harakeke/flax)
4 Bankart St, Raglan (no ramp)

07 825 7456 / 0274170251
jette@slingshot.co.nz
www.jettejespersen-art.weebly.com



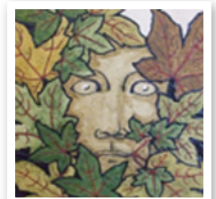
OS

no. 15

**KARRON CAMPBELL AND
RICKIE HILL**

Painters, sculptures and crafts
The Creative Work Shop, 251A Cogswell
Rd, Raglan.

07 825 5700
karron.campbell@yahoo.co.nz
myspace.com/wy_art_corner_nz



OS

no. 12

JOANNE DEAN

Oil Portraits
Old School Arts Centre

07 825 7150
joanofark8@hotmail.com
www.wsa.org.nz/joannedean.aspx



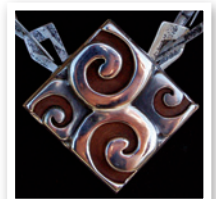
OS

no. 16

LAUREN HAYNES

Jewellery design and workshops
22 Point St, Raglan

021 6177 91
laurenhaynesjewellery@gmail.com



OS

OS Artists with this icon are participating in the open studio weekend.
See page 1. of this guide for details.

Open Studio Weekend January 28th, 29th & 30th 2012.
At all other times please contact artists directly to arrange viewing.

no. 17

LIN VAN CRAENENBROECK

Mosaics and wearable art
Matapihi Gallery, Bow St, Raglan

021 0243 0354
lin.at.moz.art@gmail.com
www.moz-art.co.nz



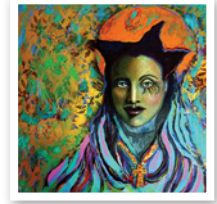
OS

no. 21

NATASHA RAO

Paint / Sculpt / Textiles

07 825 0946 / 027 7584 381
natashaandjoe@slingshot.co.nz



no. 18

LINDA HOLMES

Photography
59 Lorenzen Bay Rd, Raglan

07 825 0289 / 027 515 1008
lindaholmesphotography@xtra.co.nz
www.lindaholmesphotography.co.nz



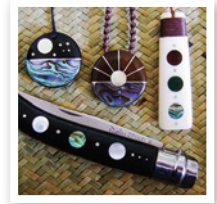
OS

no. 22

OCEAN INLAYS

Multimedia Inlay Jewellery
5 Te Mata Road, Te Mata

021 1799 588 / 07 825 7302
oceyan@gmail.com



no. 19

LUCRETIA PERKINS

Sculptor
Old School Arts Centre, Stewart St

021 380 602
lucretiaperkins@hotmail.com



OS

no. 23

RAGLAN BONE CARVING STUDIO

Maori Bone Carving and Workshops
6 Snowden Place, Raglan

021 022 37233
raglanbonecarvingstudio@hotmail.co.nz
www.maoribonecarving.com



OS

no. 20

MIRANDA JANE CAIRD

Painting
25A Calvert Rd, Whale Bay, Raglan

07 825 0367
janecaird@slingshot.co.nz
www.j.caird.vc.net.nz



OS

no. 24

RICHARD PAGE

Stone Sculpture
Te Ahiawa Road

021 1534 455
richard@richardpagesculpture.com
www.richardpagesculpture.com



OS

OS Artists with this icon are participating in the open studio weekend. See page 1. of this guide for details.

Open Studio Weekend January 28th, 29th & 30th 2012.
At all other times please contact artists directly to arrange viewing.

no. 25

ROB KEAR

Artist, Weaver, Flax Sculptor, Paint,
Steel & Clay
8 Totara Grove, Waitetuna

07 825 5277
rob.zee@actrix.co.nz
www.robkear.co.nz



OS

no. 29

SANDIE PERRY

Abstract textured paintings
100A Greenslade Road, Raglan

07 825 8874
sandie@sarge.co.nz
www.sandieperry.co.nz



OS

no. 26

ROBYN LLOYD

Ceramic Artist
905 Te Mata Road, RD2 Te Mata, Raglan

07 825 6700
rmlloyd@xtra.co.nz



OS

no. 30

SARAH STEED

Designer jewellery, ceramics, Baltic amber
teething necklaces
Old School Arts Centre, Stewart St

021 232 5296
sessteed@yahoo.co.uk
www.facebook.com/AmberNurture



OS

no. 27

RUTH PORT

Harakeke/flax fibre weaver
502 Okete Road, Raglan

07 825 7267 / 022 681 6317
hinemoaweaver@ihug.co.nz



OS

no. 31

SIMON TE WHEORO

Paint/Maori tattoo (Ta Moko)
& Sculpt

021 174 4629
sytewheoro@yahoo.co.nz



OS

no. 28

SAM MATHERS

Paint
536 Wainui Rd, Raglan

027 380 0177
sam@sammathers.com
www.sammathers.com



OS

no. 32

STUART MACKENZIE

Photography
23 Nihinihi Ave, Raglan

07 825 0083
stuart@palmprints.co.nz
www.stuartmackenzie.vc.net.nz



OS

OS Artists with this icon are participating in the open studio weekend.
See page 1. of this guide for details.

Open Studio Weekend January 28th, 29th & 30th 2012.
At all other times please contact artists directly to arrange viewing.

no. 33

SUSAN FLIGHT

Artist, sculptor in clay, tutor
Mountain Dreaming Arts Workshop, 142
Waimaunga Rd. Raglan

07 210 3000 / 027 271 6157
flight@vodafone.net.nz



OS

no. 37

YANN BORDIER

A passion for beads and gemstones
wearable art in bronze, copper and silver
Matapihi Gallery, Bow St

07 825 6515 / 021 0517134
yann.chris@xtra.co.nz



OS

no. 34

THE CLAY SHED, COMMUNITY POTTERY CLAY

Behind the Old School Arts Centre

07 825 0023
info@raglanartscentre.co.nz
www.raglanartscentre.co.nz



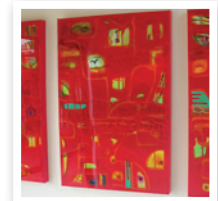
OS

no. 38

YVETTE HARRY-WRIGHT

Painting, Photography, Sculpture
Tidal Bottega: 37 Main Rd, Raglan

07 825 6566 021 190 2688
yvette@tidalbottega.co.nz
www.tidalbottega.co.nz



OS

no. 35

TREVOR PENFOLD

Wildlife & Nature Photography
Prints/Editorial/Commissions
Old School Arts Centre, Stewart St

07 825 7088
info@trevorpenfold.com
www.trevorpenfold.com



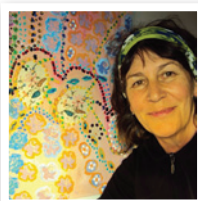
OS

no. 36

WANDA BARKER

Mixed Media abstract/Femme Collage
668 Wainui Rd, Manu Bay, Raglan

07 825 8502 / 0273 514 515
wanda@manubay.co.nz
www.puriristudio.co.nz

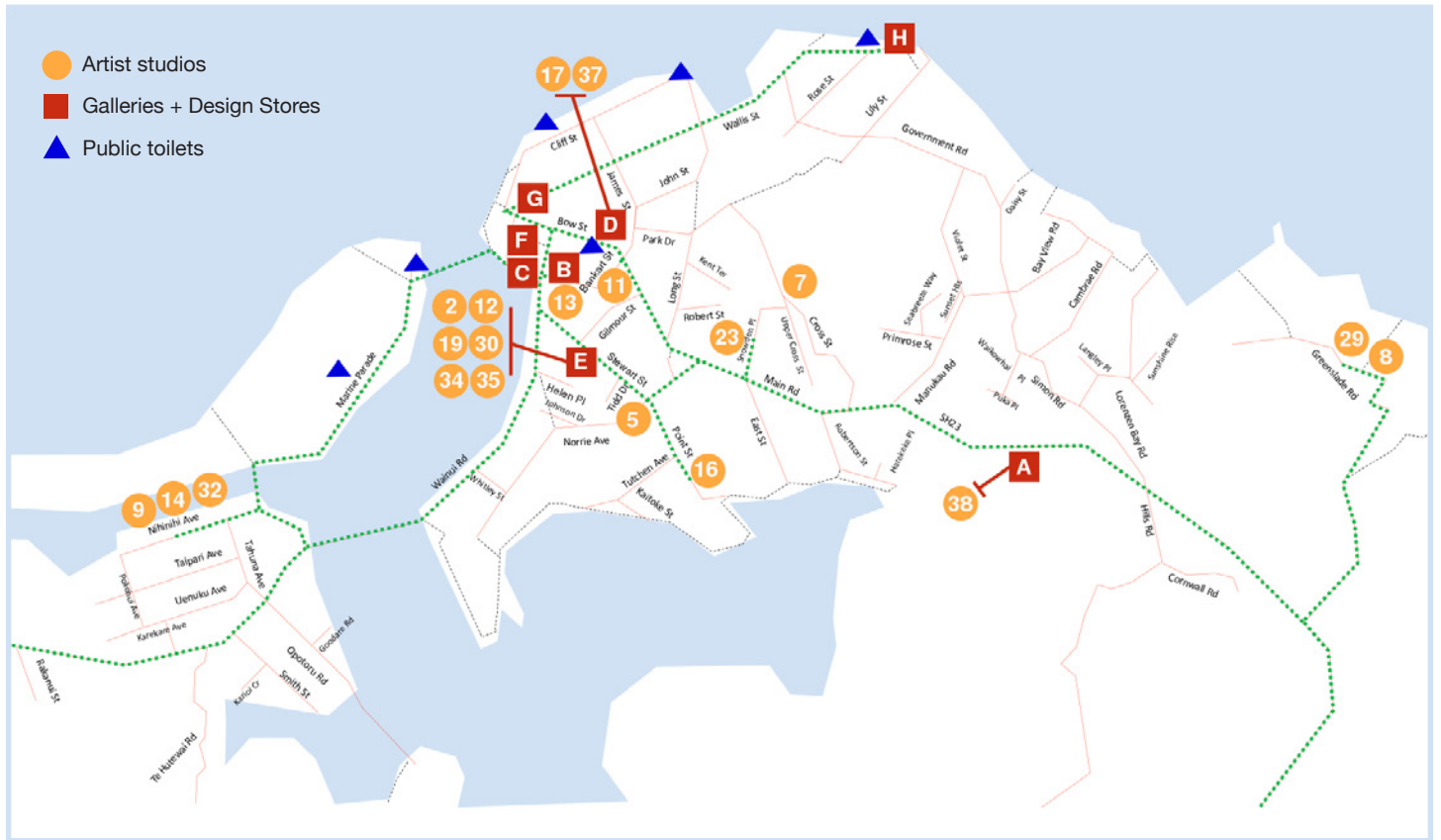


OS

Artists with this icon are participating in the open studio weekend.
See page 1. of this guide for details.

Open Studio Weekend January 28th, 29th & 30th 2012.
At all other times please contact artists directly to arrange viewing.

ARTISTS LOCATIONS WITHIN RAGLAN



Gallery key:

A - Tidal Bottega

B - Atamira Design Store

C - Flaxen

D - Matapihi Art Gallery

E - Old School Arts Centre

F - Scintilla

G - Show Off Aotearoa - NZ

H - Tony Sly Pottery

Look out for the **turquoise** + **pink** flags.

ARTISTS IN THE WIDER WHAINGAROA AREA



Gallery key:

I - Te Uku Roast Office & Gallery

GALLERIES & DESIGNER STORES

photography
sculpture
painting
textiles

tidal bottega
art studio

www.tidalbottega.co.nz 37main rd raglan w-sat 10-4

GALLERIES & DESIGNER STORES

DESIGNED & MADE IN RAGLAN NEW ZEALAND

scintilla
nz

13 Bow Street Raglan 07 825 7417
www.scintilla.co.nz

atamira

kate sylvester
something else
zoe & morgan
kathryn wilson
terraplana
nancybird bags
rata & ruby
insight swimwear
good music & books
fresh & eclectic
...something for everyone

www.atamira.co.nz
p 07 825 0482 Raglan



FLAXEN
Made in NZ

Designed and cut by Mistral Wray in the FLAXEN workshop.

Unusual, sexy, functional clothing. Proudly NZ made.

5 Wainui Rd, Raglan
Ph 825 8852

Show Off Aotearoa New Zealand

A jewellery and fine art gallery

Over the past 14 years *Show Off* has become one of New Zealand's most recognized retail outlets of genuine pounamu treasures.

2 Bow St., Raglan 3225 - open every day

Jewellery made to order

matapihi
art gallery

P 07) 825 6515 34 Bow St, Raglan Aotearoa

Original all NZ Art. Paintings, sculpture, weaving, clothing, jewellery and much more. www.matapihiartgallery.com

OPEN
7 DAYS

TonySlyPottery

— RAGLAN WHARF —

GALLERIES & DESIGNER STORES

TE UKU ROAST OFFICE & GALLERY

SH 23, Te Uku / 07 825 5866 / www.raglanroast.co.nz
Organic Fair Trade coffee roasted and served fresh daily + Art Gallery.

ART SUPPLIERS



Gordon Harris
THE ART & GRAPHIC STORE

the best art and design supplies
expert advice · unbeatable value

386 Anglesea Street, HAMILTON ph 07 834 3952 www.gordonharris.co.nz

RAGLAN BOOK & GIFT CENTRE

10 Bow Street, Raglan / 07 825 8641
Good selection of art & craft supplies available.



Waikato
Ceramics



Fast and friendly service
for all your pottery supplies

**Prompt Delivery - North Island
Wide**

**Call Free
0800 856 889**
or shop on-line
www.pottersupplies.co.nz

CAFÉS & RESTAURANTS

BURGER BAR & HOT ROAST SHOP

4 Wallis Street, Raglan / 07 825 6868
Roast meals, gourmet burgers & seafood menu.

JO'S TAKEAWAYS – CAMP STORE

Marine Parade, Te Kopua Domain, Raglan
07 825 8761 / www.facebook.com/JosTakeaways

CAFÉS & RESTAURANTS



blacksand
LICENSED CAFE . RAGLAN NZ

Art exhibitions, fresh tasty food, great coffee

17 BOW STREET P. 07 825 8588
RAGLAN – NZ E. blacksandcafe@hotmail.co.nz

RAGLAN BAKERY

Wide range of freshly made sandwiches, pies & cakes.
4 Bow Street, Raglan / 07 825 0919 / Open 7 days

RAGLANROAST COFFEE

Organic Fair Trade coffee roasted and served fresh daily.
Volcom Lane, Raglan / 07 825 8702 / www.raglanroast.co.nz



Winnies
restaurant & bar

7 Wainui Rd., Raglan 07 825 7273 supau3@aol.com

ACCOMMODATION



**FOX
GLOVES**

BED & BREAKFAST



A TRULY MEMORABLE EXPERIENCE!
5477 Highway 22, RD2, Waingarō. Telephone 07 825 4490
Email info@foxgloves.co.nz www.foxgloves.co.nz

INKLEDOO

(Chrissy & Colin Hodkinson) 47a Norrie Ave, Raglan
07 825 6793 / 027 825 6033 / www.inkledoo.co.nz

ACCOMMODATION



RAGLAN'S FIRST LUXURY YURT
Self-contained accommodation set in native bush.
Onsite Massage Therapist.
Packages available.
Romantic, outdoor spa bath.
Contact Peter & Robbyn on 07 825 7882
or Thomas on 07 825 6519
Robbyn m: 021 836 774
nikausanctuary@vodafone.co.nz
PO Box 132, Raglan
Directions: Somerst Lane - off Maungatawhiri Road.



**A private hideaway,
just 2 minutes walk to the beach,
peace & tranquillity at its best.**

**Tents, campervans or caravans,
backpackers, cabins or motel units.**



Hosts: Mary and Rob Clark

Address: Marine Parade, Raglan

Phone: (07) 825 8283

Email: stay@raglanholidaypark.co.nz



www.raglanholidaypark.co.nz

PLANTATION HOUSE

29 Rose Street, Raglan / 07 825 4515

rosie.crabrookhouse@xtra.co.nz / www.holidayhouses.co.nz

ACCOMMODATION

Raglan Sunset Motel



Quality accommodation in the heart of Raglan.

7 Bankart Street, Raglan
t: +64 7 825 0050
f: +64 7 825 0061
e: info@raglansunsetmotel.co.nz
www.raglansunsetmotel.co.nz

RAGLAN BACKPACKERS & WATER FRONT LODGE

6 Wi Neera St., Raglan / 07 825 0515 / www.raglanbackpackers.co.nz

Absolute waterfront & close to cafés + bikes, kayaks, spa pool & more.

RAGLAN INFORMATION CENTRE

Wainui Road, Raglan. For all accommodation & activity bookings, no fees!
07 825 0556 / www.raglan.org.nz / info@raglan.org.nz

RAGLAN WEST MOTEL

45 Wainui Road, Raglan (over the bridge)

07 825 8293 / raglanwest@xtra.co.nz

WATERS EDGE

100E Greenslade Road, Moonlight Bay, Raglan. www.watersedge.co.nz

07 825 0567 / 027 648 6803 / info@watersedge.co.nz

ACTIVITIES & INDULGENCES



www.adventurewaikato.co.nz

Adventure activities include: 220m Flying Fox, Abseiling, Limestone Caves, outstanding native bush, and Clay bird shooting.

Team building: includes human dog trials, swamp crossing and cave rescue scenario.

Accommodation and conference facilities

55 mins North West of Hamilton - 90 mins South West of Auckland

Phone: 07 825 4515 Email: info@adventurewaikato.co.nz

NIKAU CAVING ADVENTURES AND CAFÉ

1770 Waikaretu Valley Rd., Waikaretu (1 hr. north-west of Raglan)

Ring 09 233 3199 to book your tour / www.nikaucave.co.nz

ACTIVITIES & INDULGENCES



Nikau Sanctuary

Specialising in:

- Lomi Lomi (Hawaiian Massage)
- Lomi 'ili (Hawaiian Hot Stones)
- Acute/Chronic Pain Conditions
- Available 7 days a week & evenings

Robbyn Storey

Diploma of Therapeutic Massage (Maui, Hawaii).
RMT NZ
NZ Registered Nurse
Certified Infant Massage Instructor (IAIM)

Mob. 027 836 774 Ph. 825 7882

POLLY JACKSON HORSE RIDING SCHOOL

78 Matakotea Rd., Te Uku / 07 825 5130

Riding lessons; pony rides; horsemanship. Safe reliable ponies. All ages.

RAGLAN RUBS MASSAGE THERAPY

Therapeutic Massage and Beauty Therapy. 14 Wallis St, Raglan.

07 825 7878 / 027 277 3767 / www.raglanrubs.co.nz

TREVOR PENFOLD - WILDLIFE PHOTOGRAPHY

Photography workshops & small group or individual tuition.

07 825 7088 / www.trevorpenfold.com

Wahine Moe

FUNCTIONS • TOURS • ACCOMMODATION

Enjoy breathtaking scenic views of Raglan Harbour

Book your
Christmas
function now!



Daily Sunset Cruises | BOOK NOW!

Phone 07 825 7873 **or email** info@sleepinglady.co.nz

WILD COAST RUAPUKE HORSE ADVENTURES

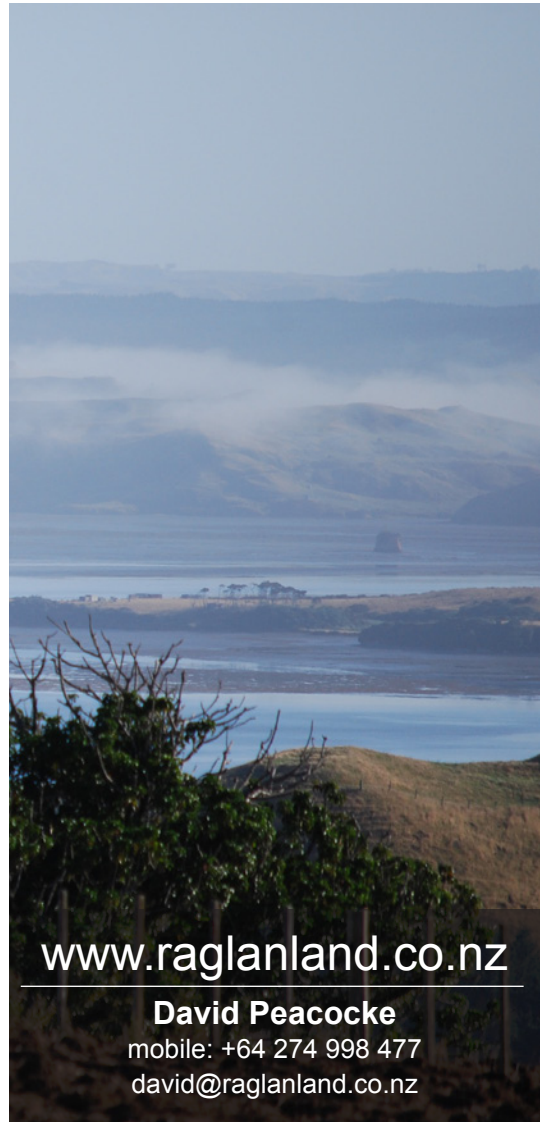
Ruapuke Beach, Raglan / 07 825 0059 / wildcoast@farmside.co.nz

Ride through native bush and rushing streams down to the ocean.

With thanks to our major sponsor for
helping to make this guide possible

**RAGLAN LAND
COMPANY**

RAGLAN LAND COMPANY



www.raglanland.co.nz

David Peacocke

mobile: +64 274 998 477

david@raglanland.co.nz